

THE GEOGRAPHY OF EDUCATIONAL OPPORTUNITY IMPLICATIONS FOR STATE EDUCATION AGENCIES (SEA)

MAKING
RESEARCH
RELEVANT

Trent Sharp, *Senior Systems Change Consultant*

November 2018

AMERICAN INSTITUTES FOR RESEARCH | AIR.ORG



Source: <https://www.boredpanda.com/poor-design-decisions-fail/>

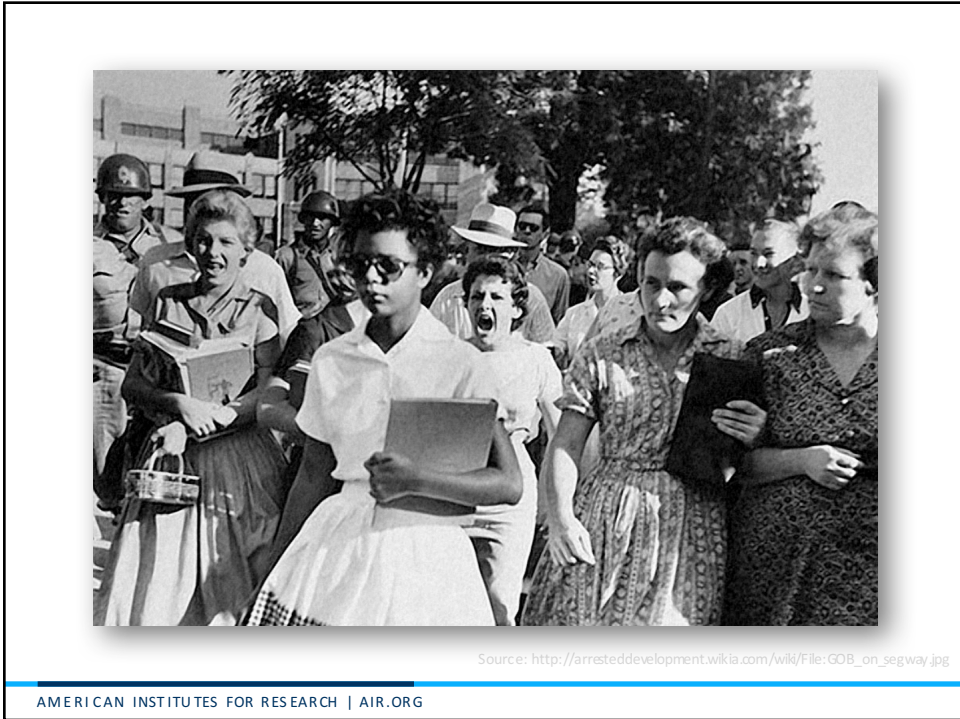
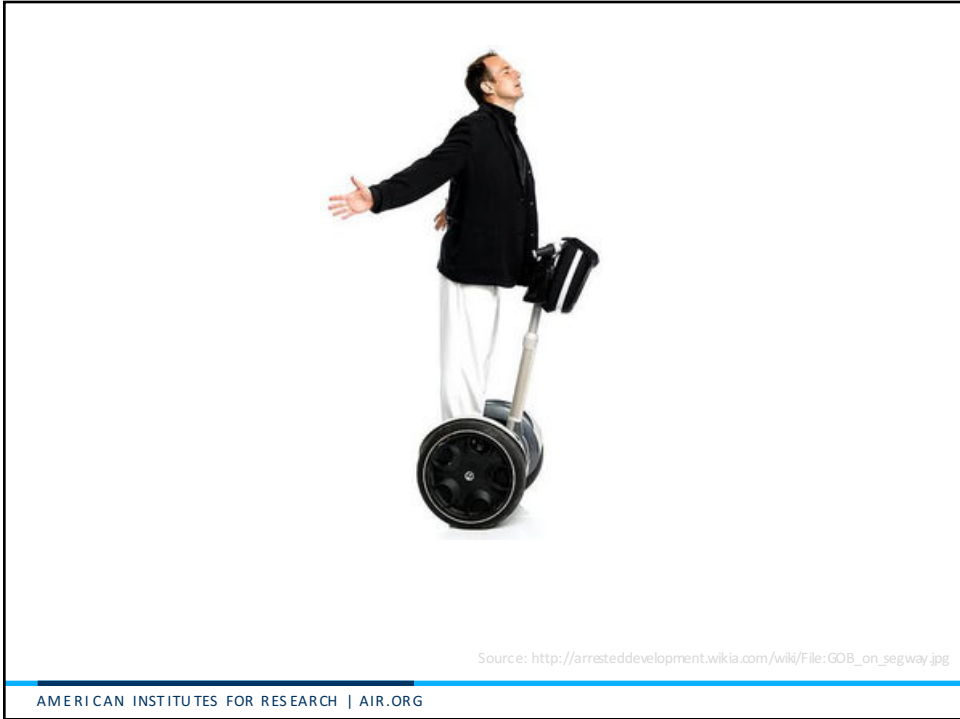
AMERICAN INSTITUTES FOR RESEARCH | AIR.ORG



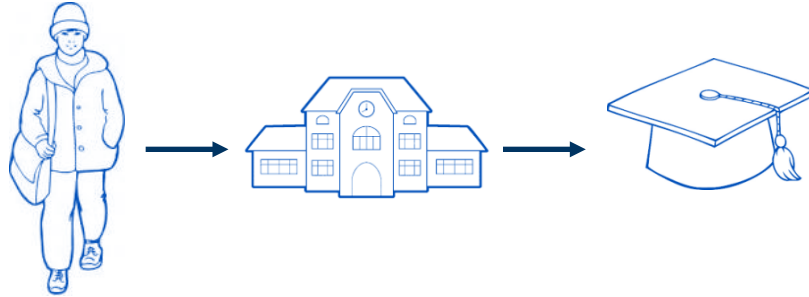
Source: <https://www.boredpanda.com/poor-design-decisions-fails/>



Source: <https://www.boredpanda.com/poor-design-decisions-fails/>

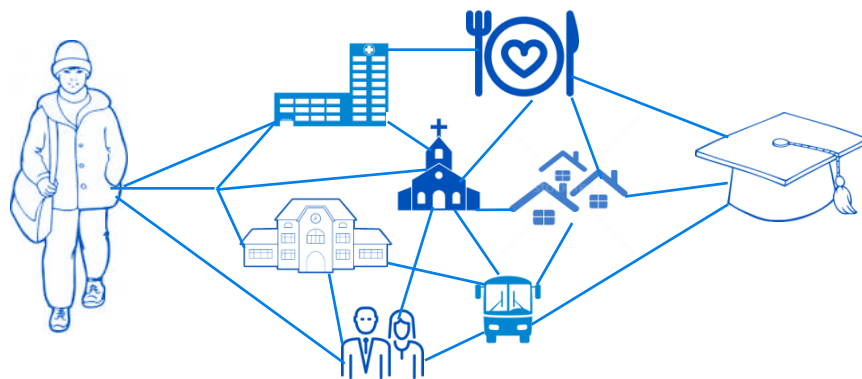


Educational Opportunity



(Coleman, 1968)

Geography of Educational Opportunity



(Tate, 2008)

Geography of Educational Opportunity



AMERICAN INSTITUTES FOR RESEARCH | AIR.ORG

Change the DNA of the SEA

See the whole system

Create strategic coalitions

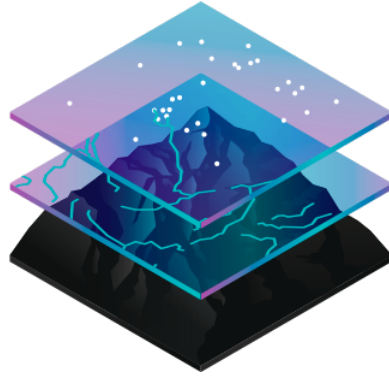
Involve and empower
those who are most
impacted

Source: <https://sciencing.com/breaks-apart-double-helix-dna-3326.html>

AMERICAN INSTITUTES FOR RESEARCH | AIR.ORG

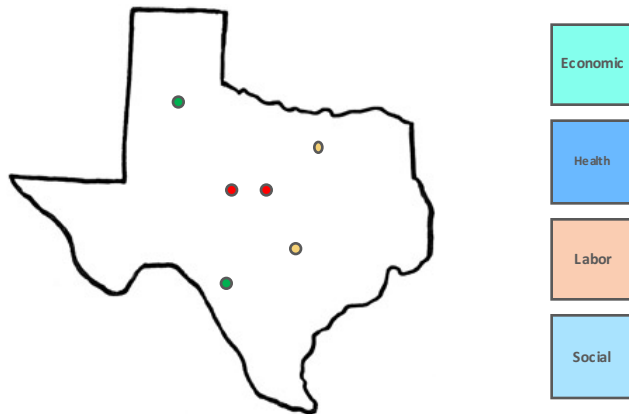
Geographic Information Systems (GIS)

GIS software uses maps as a container for multiple layers of data.

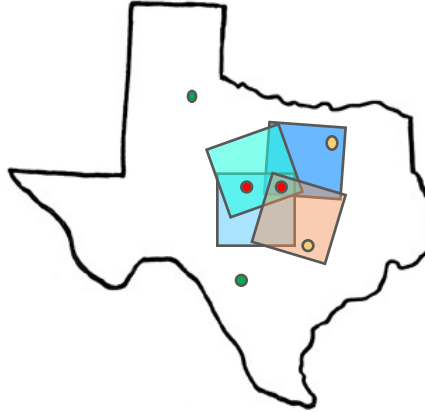


Source: <https://www.esri.com/en-us/what-is-gis/overview>

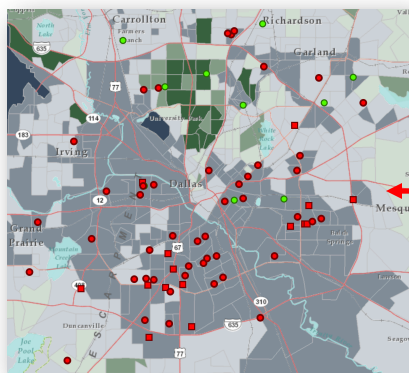
How GIS works



How GIS works



How GIS works

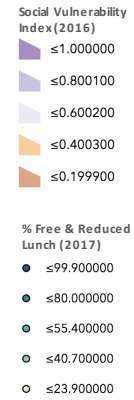
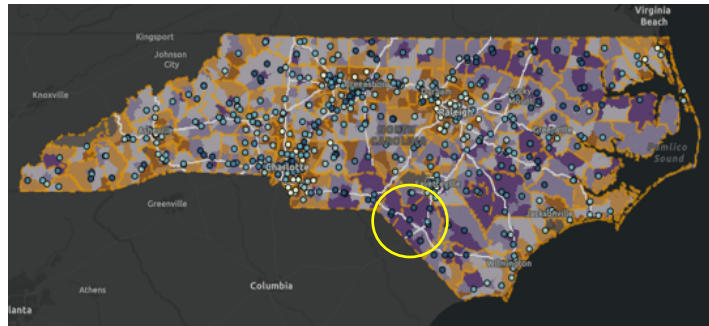


Geography ↓

Variables ↓

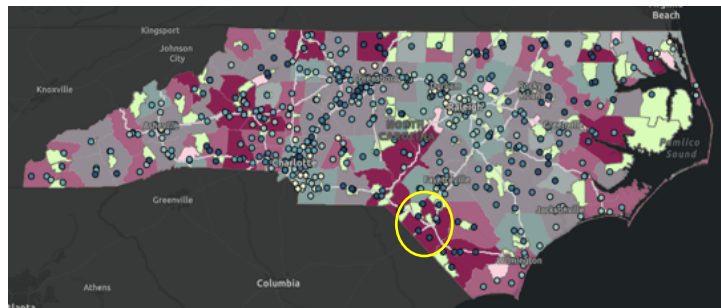
| A | B | C | D | E | F | G |
|------------------|--|-------------------|-------------|------------|------------|-------|
| GEO_ID | SCHOOL | LWCA Name | Latitude | Shape_Area | Total_Area | Count |
| 3700000040000001 | Irvington Consolidated Independent School District | South Plains | 33.1784326 | 181384110 | 100 | 100 |
| 3700000040000002 | East Independent School District | South Plains | 160549775 | 163381025 | 97.11 | 100 |
| 3700000040000003 | Rockledge Independent School District | Hickie Rio Grande | 263300624 | 160197623 | 95.82 | 100 |
| 3700000040000004 | Rockwall Consolidated Independent School District | West Central | 150335101 | 173569139 | 91.14 | 100 |
| 3700000040000005 | Reparado Independent School District | West Central | 320001161 | 160712316 | 92.84 | 100 |
| 3700000040000006 | North Central Independent School District | West Central | 160004667 | 168004110 | 96.91 | 100 |
| 3700000040000007 | Farther Creek Consolidated Independent School District | West Central | 444113116 | 17816555 | 94.83 | 100 |
| 3700000040000008 | Spring Branch Independent School District | West Central | 444113116 | 16451222 | 100 | 100 |
| 3700000040000009 | North Central Independent School District | West Central | 728914321.6 | 16224666 | 96.5 | 100 |
| 3700000040000010 | East Central Independent School District | West Central | 30016222.8 | 16700222 | 100 | 100 |
| 3700000040000011 | North Central Independent School District | West Central | 762216947.2 | 163816221 | 96.91 | 100 |
| 3700000040000012 | Deason Independent School District | North East Texas | 260320216.8 | 160201716 | 100 | 100 |
| 3700000040000013 | College Station Independent School District | North East Texas | 270362016.9 | 270042109 | 100 | 100 |
| 3700000040000014 | North Central Independent School District | North East Texas | 60230914.7 | 160201716 | 100 | 100 |
| 3700000040000015 | Rockwall Independent School District | West Central | 389189944.4 | 169189444 | 100 | 100 |
| 3700000040000016 | Rockwall Independent School District | Central Texas | 254212162.5 | 254212161 | 100 | 100 |
| 3700000040000017 | Irving Independent School District | FortWorth | 254411902 | 254411902 | 100 | 100 |
| 3700000040000018 | Irving Independent School District | Central Texas | 324274082.3 | 324274082 | 100 | 100 |
| 3700000040000019 | Irving Independent School District | Central Texas | 210071628.5 | 210007171 | 100 | 100 |
| 3700000040000020 | Irving Independent School District | East Texas | 36005361.2 | 150005361 | 100 | 100 |
| 3700000040000021 | Irving Independent School District | West Central | 210016028 | 210001602 | 100 | 100 |
| 3700000040000022 | Irving Independent School District | West Central | 370031977.1 | 270031977 | 100 | 100 |
| 3700000040000023 | Irving Independent School District | North Central | 400040071 | 484207869 | 95.1 | 100 |
| 3700000040000024 | Irving Independent School District | Coastal Bend | 1501878467 | 101074467 | 100 | 100 |
| 3700000040000025 | Irving Independent School District | Coastal Bend | 136840217 | 146840208 | 100 | 100 |
| 3700000040000026 | Irving Independent School District | North Central | 1002071.7 | 10024708 | 100 | 100 |
| 3700000040000027 | Irving Independent School District | Upper Rio Grande | 684324059 | 684324048 | 100 | 100 |
| 3700000040000028 | Irving Independent School District | Coastal Bend | 700140214.4 | 700061901 | 99.87 | 100 |
| 3700000040000029 | Irving Independent School District | Coastal Bend | 861382744.9 | 815027767 | 100 | 100 |
| 3700000040000030 | Irving Independent School District | North Central | 624404823.7 | 624048237 | 99.81 | 100 |
| 3700000040000031 | Irving Independent School District | FortWorth | 290348953.5 | 280348949 | 100 | 100 |
| 3700000040000032 | Irving Independent School District | South Plains | 180470674.1 | 180470674 | 100 | 100 |

Geography of Educational Opportunity



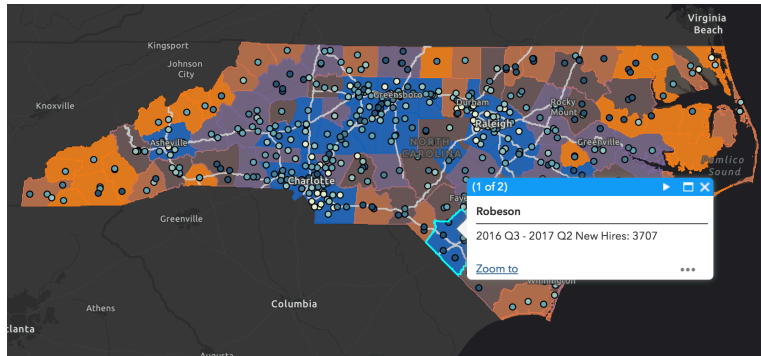
15

Geography of Educational Opportunity



16

Geography of Educational Opportunity



Robeson County had 3707 new hires in the manufacturing industry from Q2 2016 to Q2 2017

17



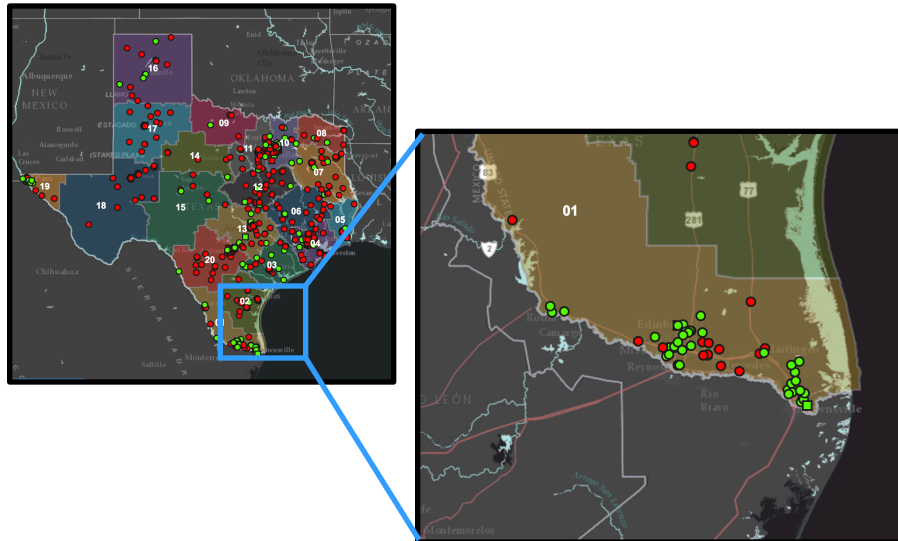
Opportunity in Geography

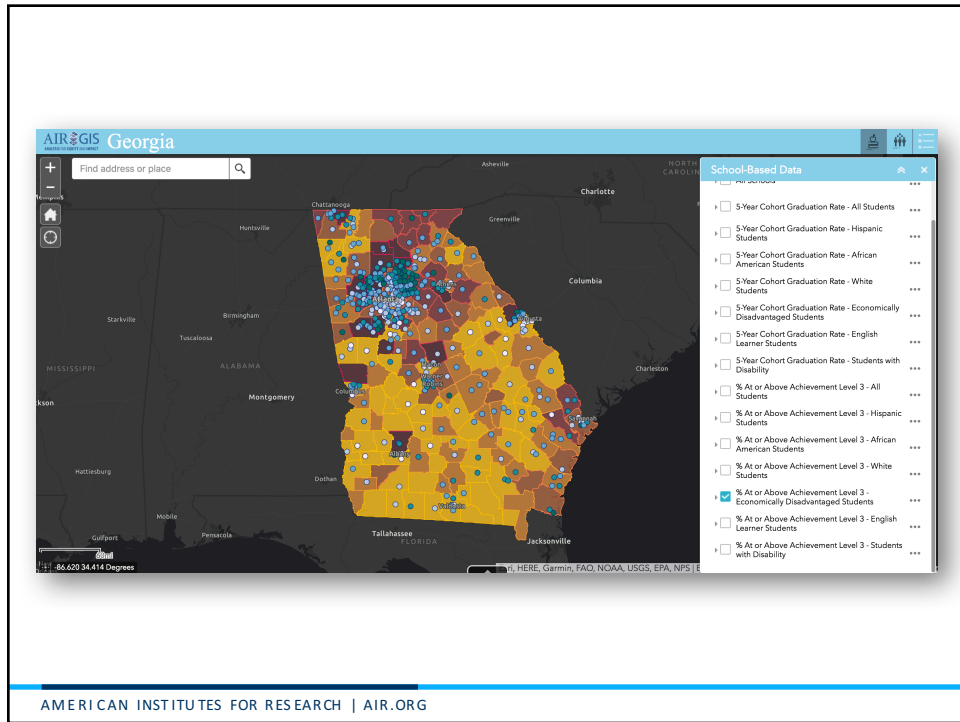
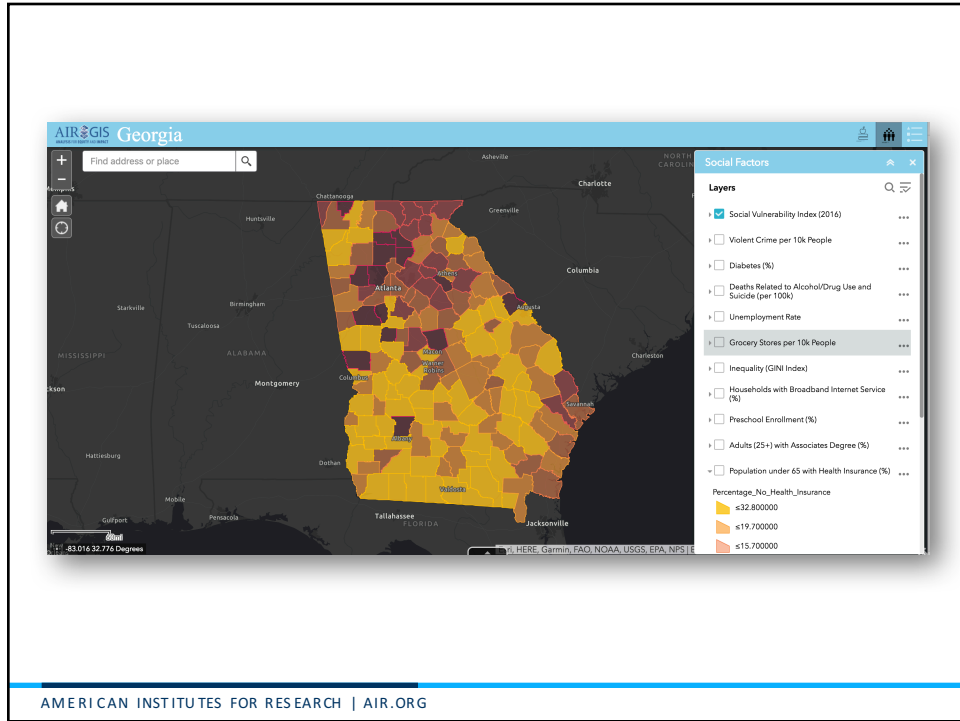
The geography of educational opportunity typically focuses on inequality between low and high opportunity neighborhoods, which ignores the assets within them.

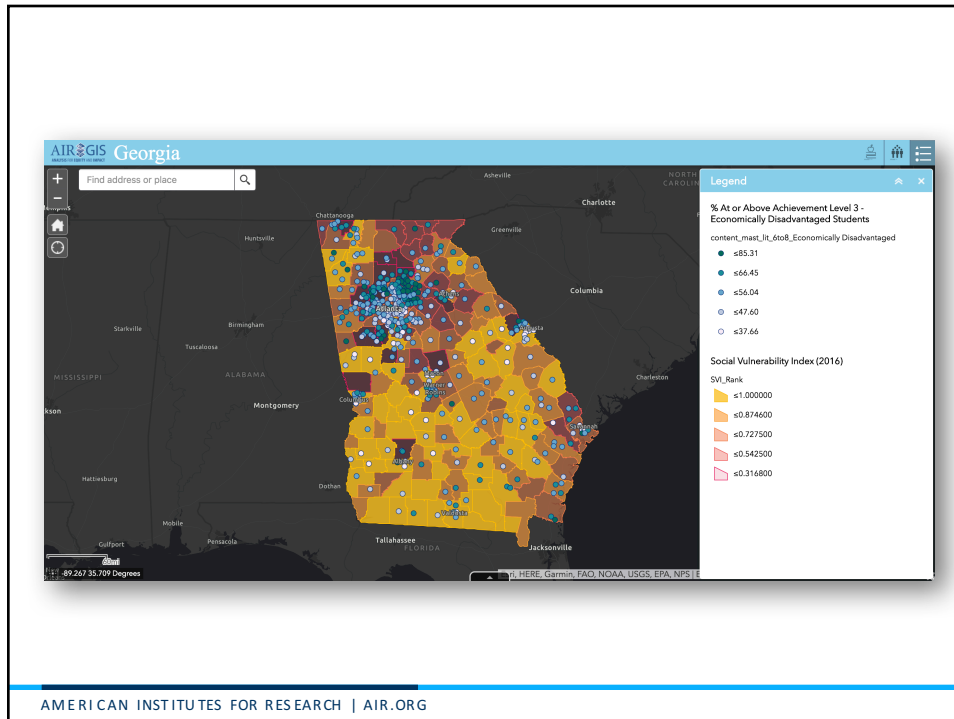
Low-opportunity communities are not only places of inequality, but also places of possibility.

- Green (2015)

Opportunities in Geography







Guidance for Work Session

Where do we find evidence of inequitable geographies of educational opportunity?

What more do we need to know and who can help us?

Which stakeholders do we need to involve in order to understand the opportunities in geography?



AMERICAN INSTITUTES FOR RESEARCH®

TRENT SHARP
512.391.6572
TSHARP@AIR.ORG

MAKING
RESEARCH
RELEVANT

THANK YOU

AMERICAN INSTITUTES FOR RESEARCH | AIR.ORG
Copyright © 2018 American Institutes for Research. All rights reserved.

The AIR logo is repeated in the bottom right corner of the slide, consisting of the stylized building icon and the letters "AIR" in a serif font.